

**524J**

**PACKAGED AIR-HANDLING UNITS**

**60Hz**

**WITH PURON® (R-410A) REFRIGERANT**

**SIZES 07-28**



## Submittal Data



**Certified to ISO 9001**

### DESCRIPTION

The 524J units are completely packaged direct expansion air-handling units offering the ultimate in installation ease and flexibility. Combined with Bryant 569J Series condensing units, these packaged air handling units offer system capacities from 6 up to 25 tons. These units may be installed in either the vertical or horizontal configuration with no modifications. Powerful fan systems allow easy adaptation to existing ductwork. Heating capability is provided by electric heaters, hot water coils or steam coils.

### STANDARD FEATURES

- Puron® (R-410A) HFC refrigerant
- Cleanable insulation treated with an anti-microbial agent
- Two sloped condensate pans on each unit for horizontal or vertical applications
- 2-inch filters
- Powerful belt-driven forward curved fans
- Factory-installed fan motor and contactor
- Refrigerant metering device (TXV's) — factory-installed
- Easy maintenance — removal of a single panel allows access to virtually all components
- Single refrigerant circuit on 6 to 10 ton units, dual refrigerant circuit on 12.5 to 25 ton units. Dual circuit units can be field modified for use on single circuit condensing units.
- Single blower on 6 to 10 ton units; dual blower on 12.5 to 25 ton units
- Optional 2-speed indoor fan with VFD controller (12-28 models)
- 24-volt terminal block for control wiring connection
- Standard one-year warranty

## PERFORMANCE DATA

Total Cooling Capacity \_\_\_\_\_ MBtuh      External Static Pressure \_\_\_\_\_ in. wg  
Sensible Cooling Capacity \_\_\_\_\_ MBtuh      RPM \_\_\_\_\_, BHP \_\_\_\_\_  
Entering Air \_\_\_\_\_ °F db \_\_\_\_\_ °F wb      Saturated Suction Temperature \_\_\_\_\_ °F  
Airflow \_\_\_\_\_ Cfm      Total Heating Capacity \_\_\_\_\_ Mbtuh

524J

## ELECTRICAL DATA

Power Supply to Unit \_\_\_\_\_ Volts \_\_\_\_\_ Phase \_\_\_\_\_ Hz  
Minimum Circuit Amps \_\_\_\_\_ Maximum Overcurrent Protection \_\_\_\_\_

## SUBMITTAL DATA

Job Name \_\_\_\_\_  
Architect \_\_\_\_\_  
Engineer \_\_\_\_\_  
Contractor \_\_\_\_\_  
Unit Designation \_\_\_\_\_

## FACTORY-INSTALLED OPTIONS (FIOPs)

- Fan Motor Options
  - Standard Motor/Standard Drive
  - Standard Motor/Medium Drive
  - High Motor/High Drive
- 2-Speed Indoor Fan Motor system utilizes a Variable Frequency Drive (VFD) to automatically adjust the indoor fan motor for 2 speed indoor fan motor control. Conforms to ASHRAE 90.1 2010 Standard – section 6.4.3.10.b. Available on 12 to 28 models with two stage cooling control.
- Painted Cabinet

## OPTIONAL WARRANTIES

- Complete Unit Parts only up to 5 years
- Complete Unit Parts and Labor up to 5 years

Many other optional warranties are available. See the *Commercial Start-Up and Optional Extended Warranty Price* price pages for further information.

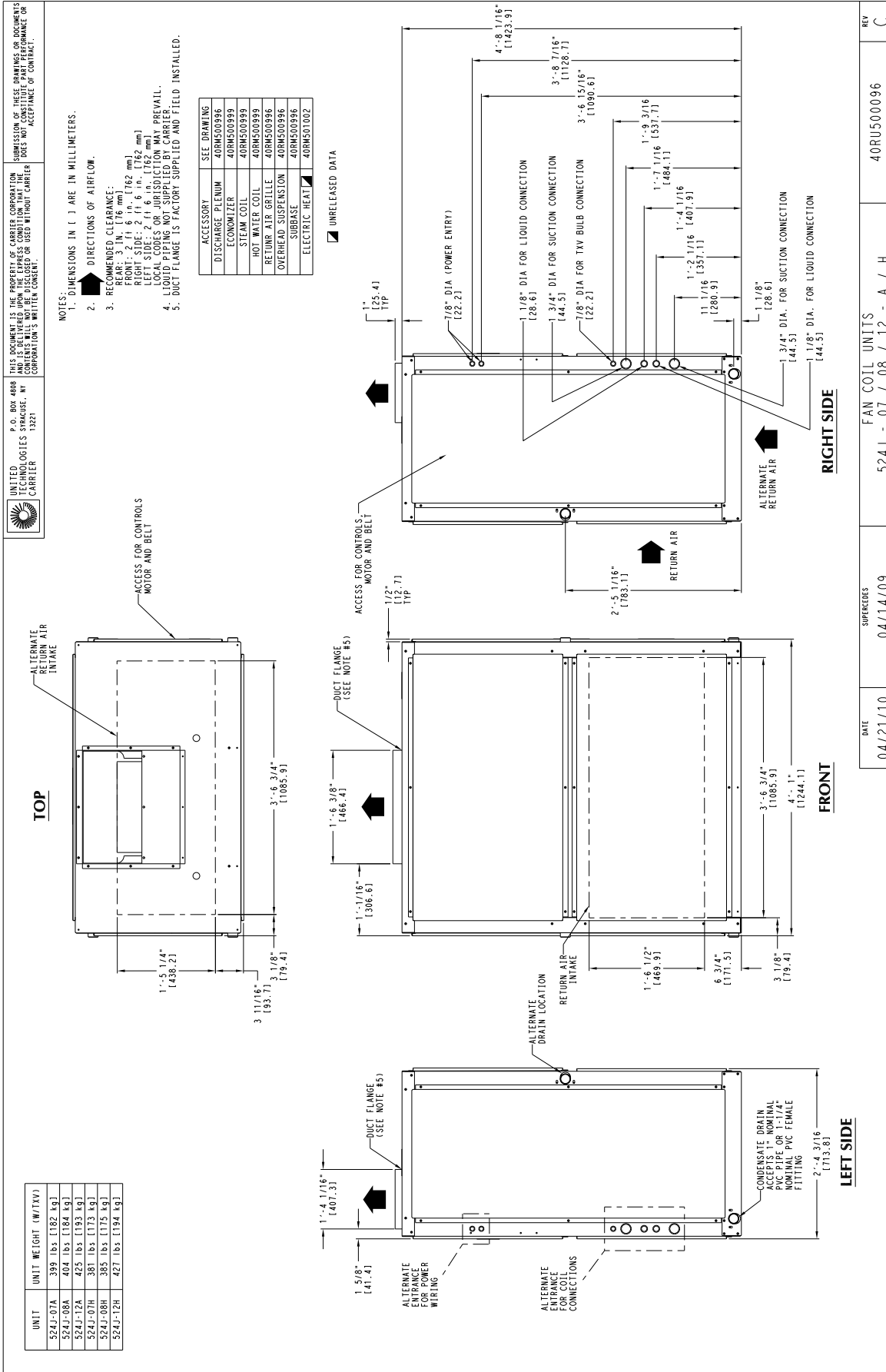
---

## FIELD INSTALLED ACCESSORIES

- Economizer - Enthalpy Controlled - Standard Leak design
- Economizer – temperature dry bulb controlled – Ultra LOW LEAK - EconoMiSer X with solid-state W7220 controller, gear-driven, modulating damper, spring return actuator. Supply and outdoor air sensors, and CO<sub>2</sub> sensor compatible, for use in electro mechanical controls only. Also includes return and outside air damper leakage that meets Title 24 section 140.4 requirements. Controller meets California Title 24 Section 120.2 Fault Detection and Diagnostic (FDD) requirements.
- Enthalpy Control for W7220 Controller only, (One required for single enthalpy, two required for different enthalpy)
- Display Kit for Variable Frequency Drive (VFD), 2-Speed Indoor Fan Motor System. Allows additional set up and diagnostics of the unit VFD controller. Can be unit mounted or used with any other compatible VFD model as a reusable device.
- Electric Heat: \_\_\_\_\_ Volts, \_\_\_\_\_ kW
- Hot Water Coil (2 row)
- Condensate Overflow Switch Assemble
- Discharge Plenum\*
- Discharge Plenum (painted)\*
- Return Air Grille
- Return Air Grille (painted)
- Steam Coil (1 row)
- Floor Mount Base (Subbase)
- Floor Mount Base (Subbase) - Painted
- Overhead Suspension Brackets
- CO<sub>2</sub> Room Sensor - Wall mount (Aspirator Box required for duct mounting)
- Thermostats

\* Discharge Plenums are shipped knocked down and require field assembly. Cannot be used with electric heat or horizontal application.

# CERTIFIED DIMENSION 524J\*07, 08, 12



DATE	04/21/10	SUPERSEDES	04/14/09	FAN COIL UNITS	524J - 07 / 08 / 12 - A / H	REV	C
						40RU500096	

# CERTIFIED DIMENSION 524J\*14, 16, 25

UNITED TECHNOLOGIES STRAUSER, NY CORPORATION'S WRITTEN CONSENT.  
 P.O. BOX 4888  
 13271

THIS DOCUMENT IS THE PROPERTY OF UNITED TECHNOLOGIES STRAUSER, NY CORPORATION. IT IS TO BE USED ONLY FOR THE PROJECT AND NOT FOR REUSE OR REPRODUCTION WITHOUT CARRIER'S WRITTEN CONSENT.

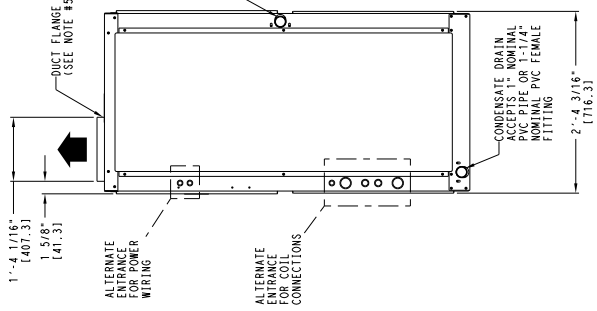
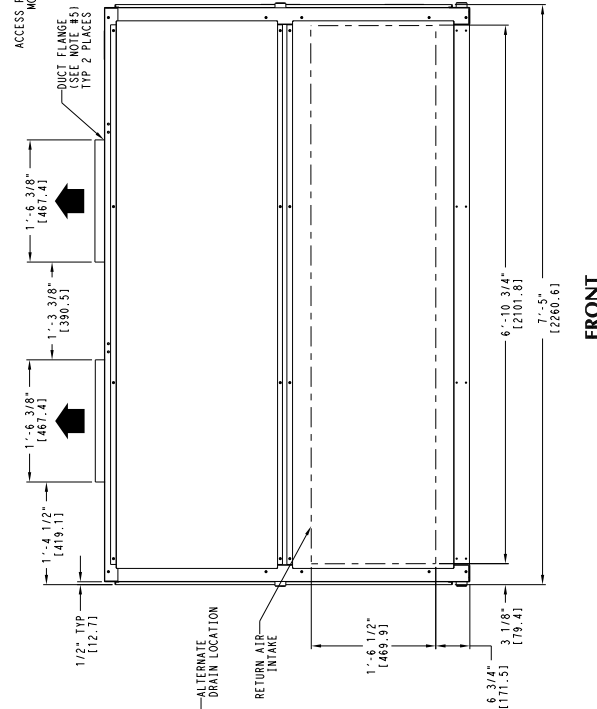
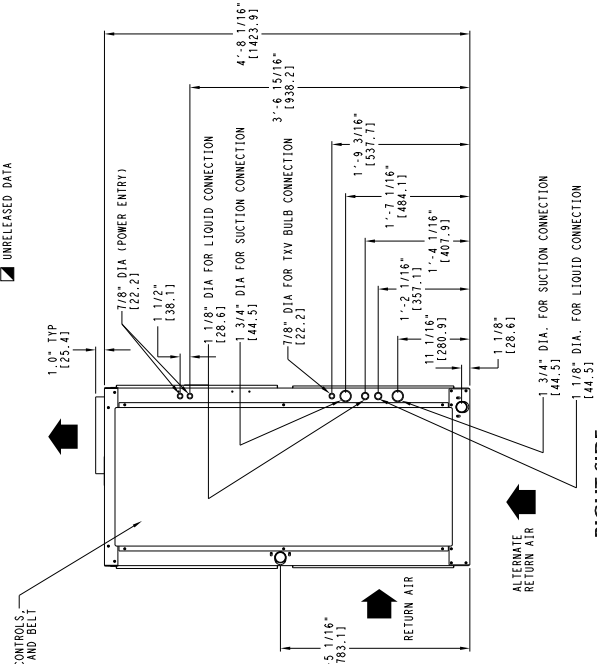
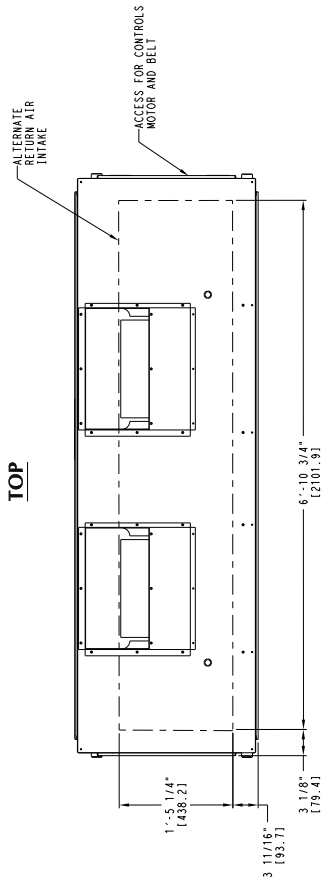
THIS DOCUMENT IS THE PROPERTY OF CARRIER CORPORATION. IT IS TO BE USED ONLY FOR THE PROJECT AND NOT FOR REUSE OR REPRODUCTION WITHOUT CARRIER'S WRITTEN CONSENT.

UNRELEASED DATA

UNIT	UNIT WEIGHT (W/TV)
524J-14A	695 lbs. (316 kg.)
524J-16A	713 lbs. (323 kg.)
524J-25A	730 lbs. (332 kg.)
524J-16B	713 lbs. (323 kg.)
524J-25B	720 lbs. (327 kg.)

- NOTES:
1. DIMENSIONS IN [ ] ARE IN MILLIMETERS.
  2. DIRECTIONS OF AIRFLOW.
  3. RECOMMENDED CLEARANCE:  
 REAR: 3" (76.2 mm)  
 FRONT: 2 ft 6 in. (762 mm)  
 RIGHT SIDE: 2 ft 6 in. (762 mm)  
 LEFT SIDE: 2 ft 6 in. (762 mm)  
 LOCAL CODES OR JURISDICTIONS MAY PREVAIL.
  4. LIQUID PIPING NOT SUPPLIED BY CARRIER.
  5. DUCT FLANGE IS FACTORY SUPPLIED AND FIELD INSTALLED.

ACCESSORY	SEE DRAWING
DISCHARGE PLENUM	40RMS00947
ECONOMIZER	40RMS1000
STEAM COIL	40RMS1000
HOT WATER COIL	40RMS1000
RETURN AIR GRILLE	40RMS00947
OVERHEAD SUSPENSION	40RMS00947
SUBBASE	40RMS00947
ELECTRIC HEAT	40RMS1002



REV	DATE	SUPERSEDES	FAN COIL UNITS	40RU500097
C	04/21/10	04/14/09	524J - 14 / 16 / 25 - A / H	40RU500097

524J

C14204

# CERTIFIED DIMENSION 524J\* 28

UNITED TECHNOLOGIES SYMBOUSE, NY  
 P.O. BOX 4888  
 13201  
 CARRIER



THIS DOCUMENT IS THE PROPERTY OF CARRIER CORPORATION  
 AND IS TO BE USED ONLY FOR THE PROJECT AND FOR WHICH IT  
 WAS PREPARED. IT IS NOT TO BE REPRODUCED OR USED WITHOUT CARRIER  
 CORPORATION'S WRITTEN CONSENT.

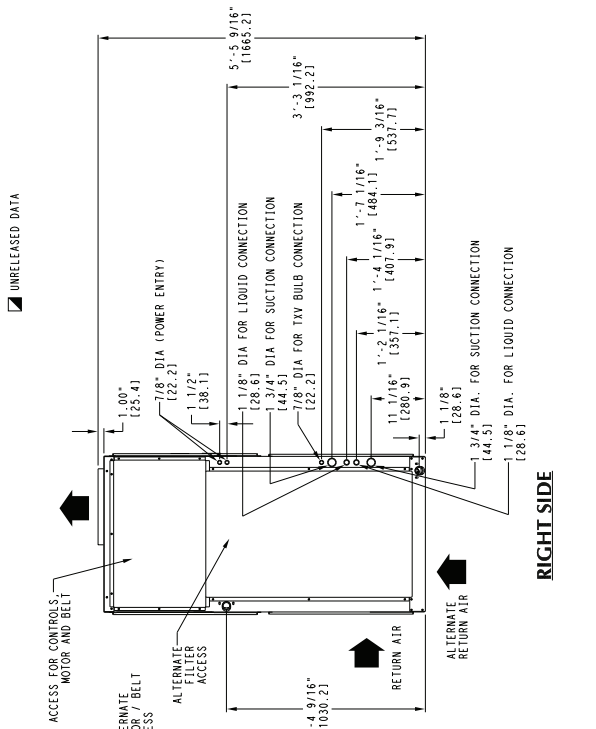
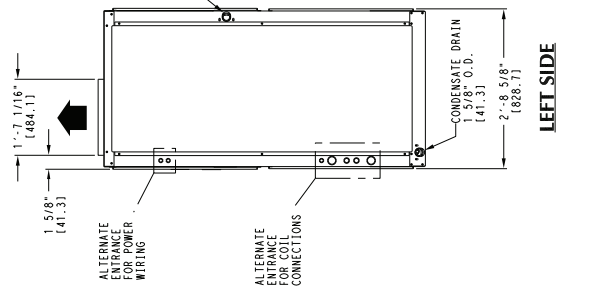
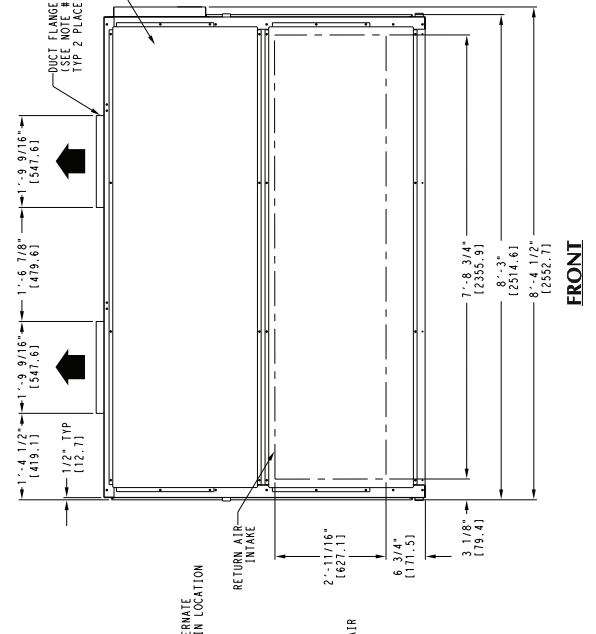
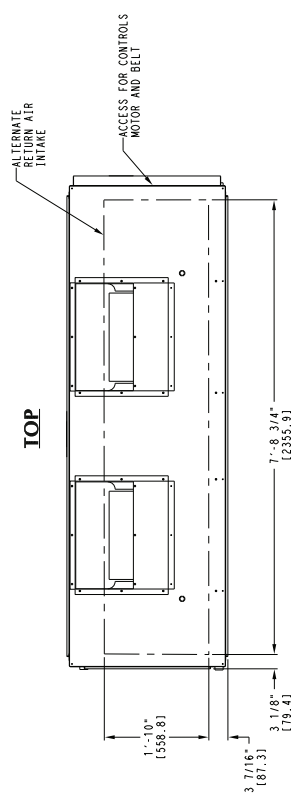
THIS DOCUMENT IS THE PROPERTY OF CARRIER CORPORATION  
 AND IS TO BE USED ONLY FOR THE PROJECT AND FOR WHICH IT  
 WAS PREPARED. IT IS NOT TO BE REPRODUCED OR USED WITHOUT CARRIER  
 CORPORATION'S WRITTEN CONSENT.

UNIT	UNIT WEIGHT (W/TXV)
524J-28A	1050 lbs (477 kg)

- NOTES:
1. DIMENSIONS IN ( ) ARE IN MILLIMETERS.
  2. DIRECTIONS OF AIRFLOW.
  3. RECOMMENDED CLEARANCE:  
 FRONT: 2 ft 6 in. (762 mm)  
 REAR: 3 in. (76 mm)  
 RIGHT SIDE: 2 ft 6 in. (762 mm)  
 LEFT SIDE: 2 ft 6 in. (762 mm)  
 LOCAL CODES OR JURISDICTION MAY PREVAIL.
  4. LIQUID PIPING NOT SUPPLIED BY CARRIER.
  5. DUCT FLANGE IS FACTORY SUPPLIED AND FIELD INSTALLED.

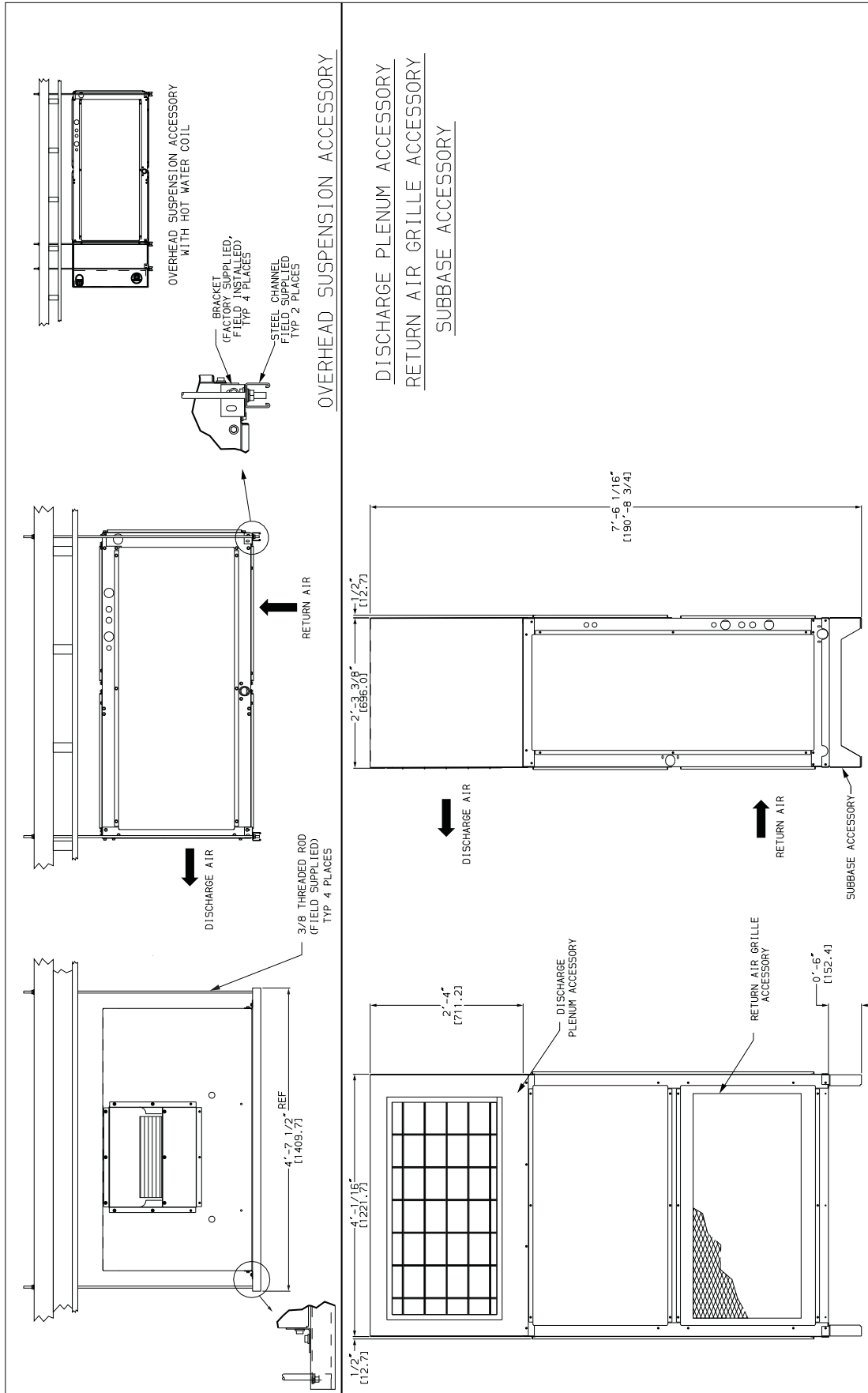
ACCESSORY	SEE DRAWING
DISCHARGE PLENUM	40RM500998
ECONOMIZER	40RM501001
STEAM COIL	40RM501001
HOT WATER COIL	40RM501001
RETURN AIR GRILLE	40RM500988
OVERHEAD SUSPENSION	40RM500988
SUBBASE	40RM500988
ELECTRIC HEAT	40RM501002

UNRELEASED DATA



DATE	SUPERSEDES	FAN COIL UNITS	REV
09/14/11	04/21/10	524J - 28 - A	D
		40RU500098	

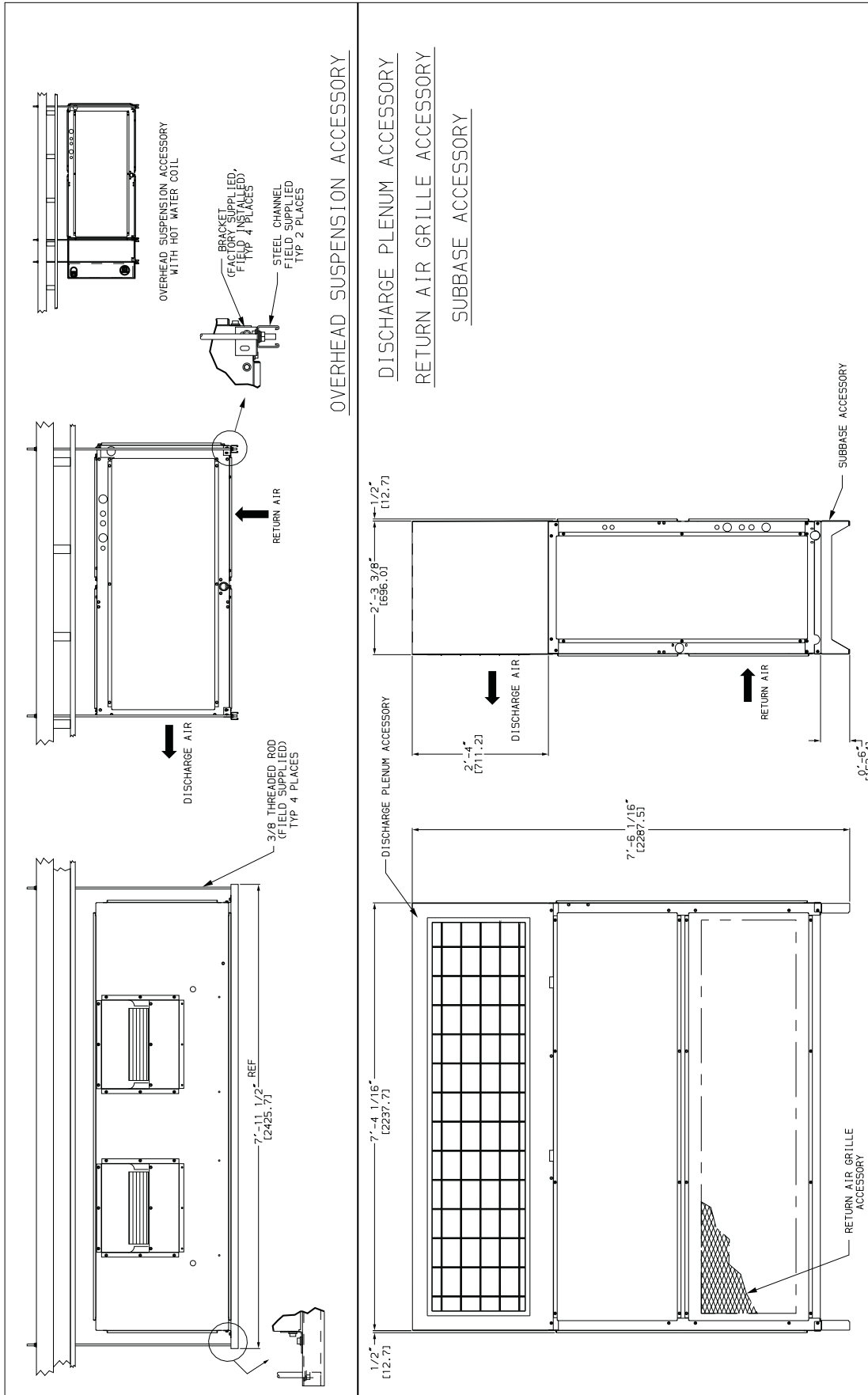
# CERTIFIED DIMENSION - ACCESSORIES 524J\*07, 08, 12



C09206

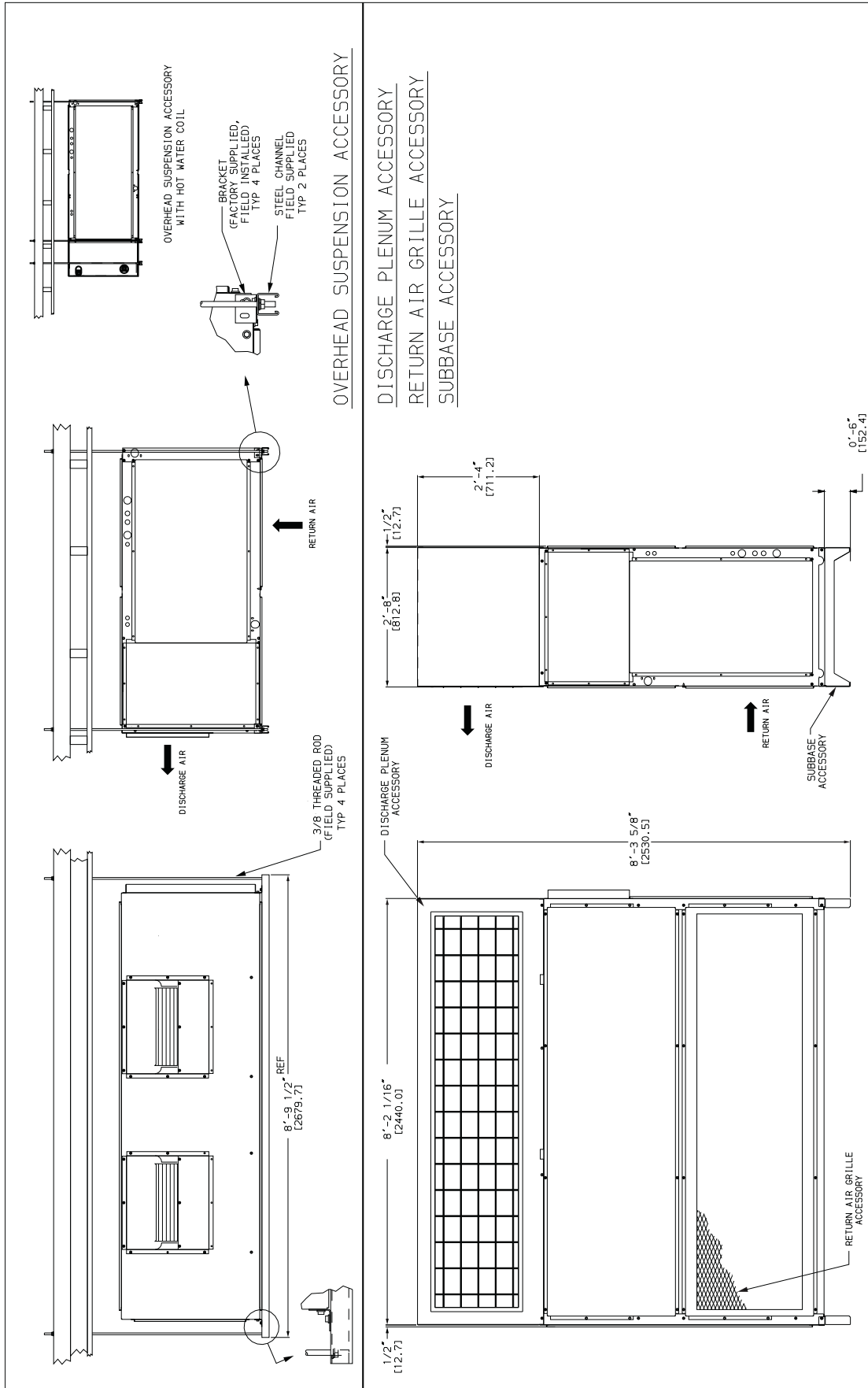
524J

**CERTIFIED DIMENSION - ACCESSORIES 524J\*14, 16, 25**





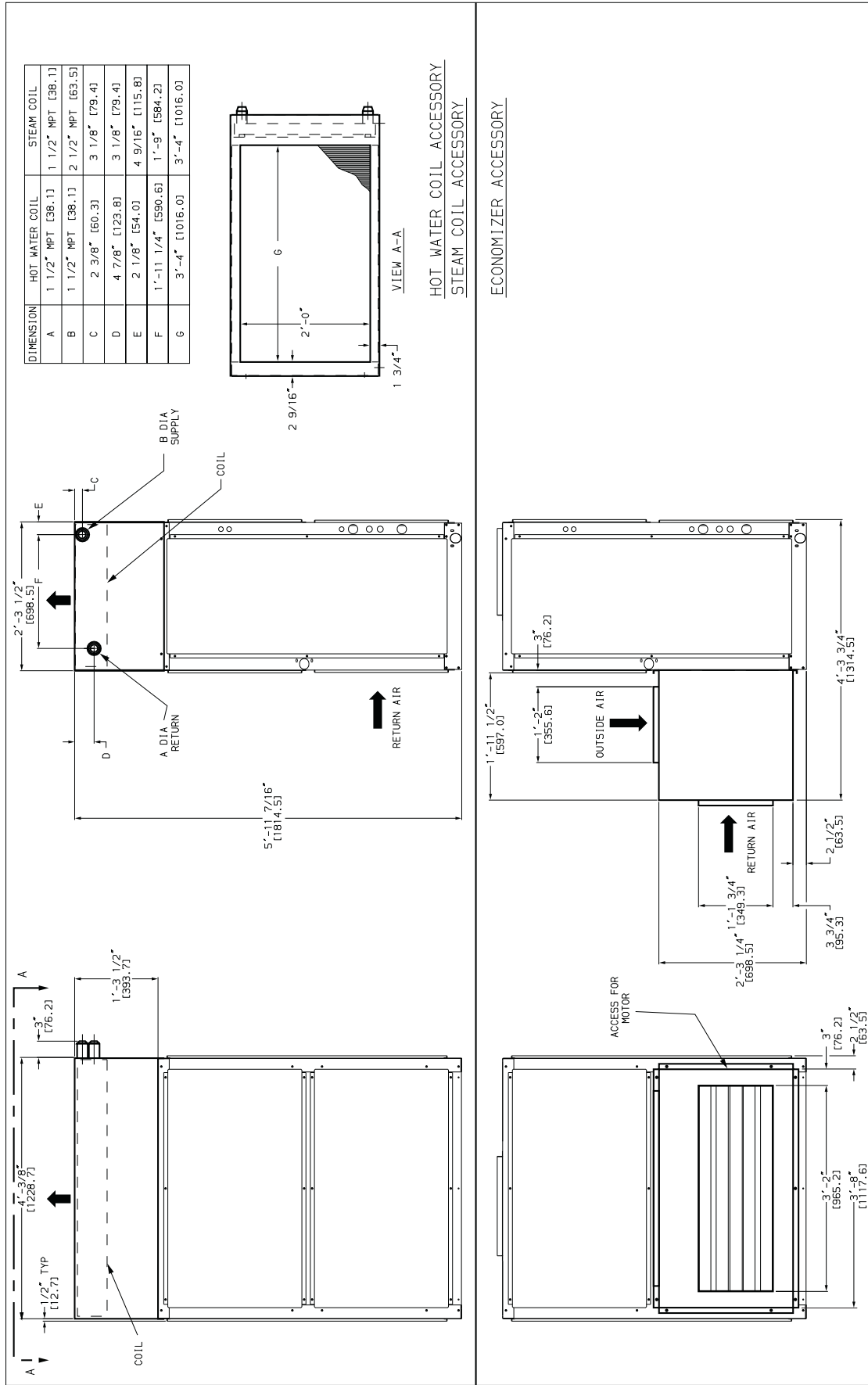
# CERTIFIED DIMENSION - ACCESSORIES 524J\*28



C09463

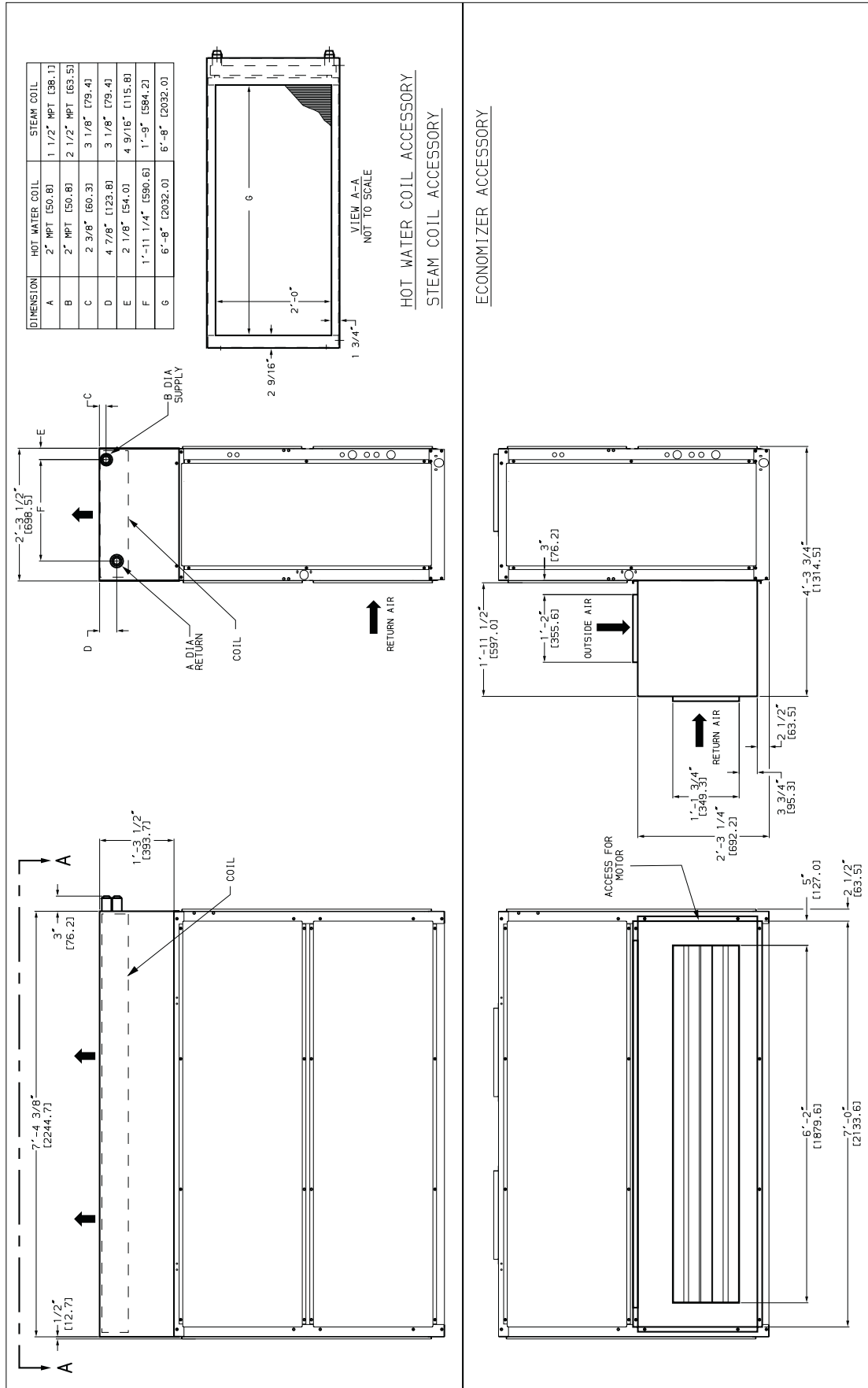
524J

CERTIFIED DIMENSION - ACCESSORIES 524J\*07, 08, 12



C09208

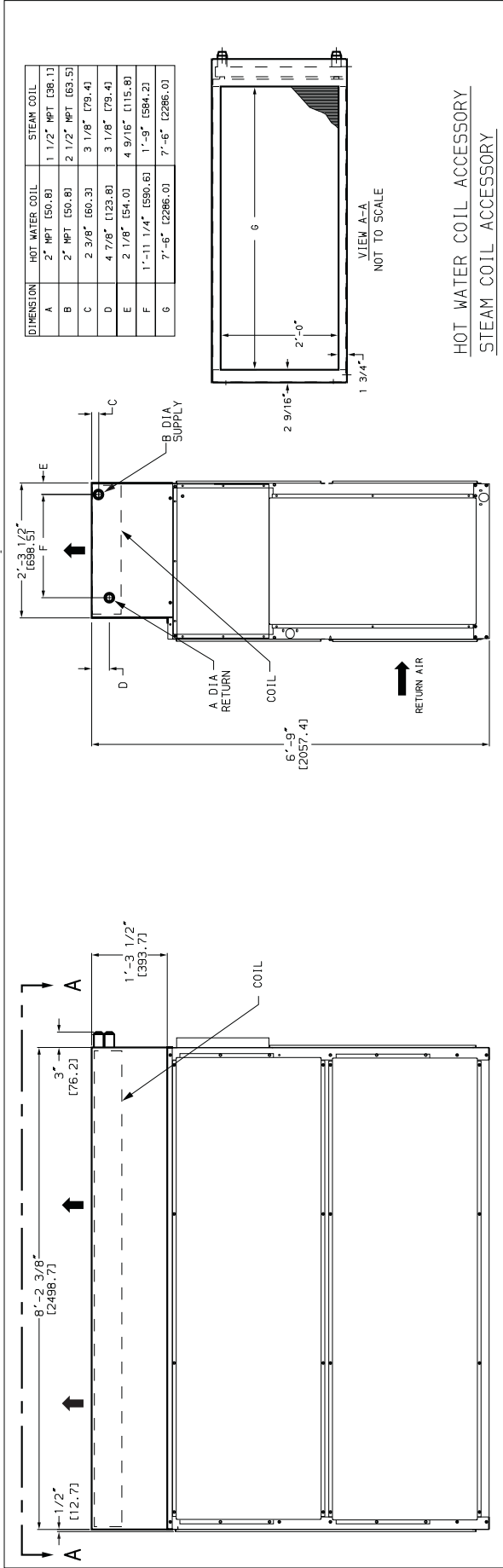
# CERTIFIED DIMENSION - ACCESSORIES 524J\*14, 16, 25



C09209

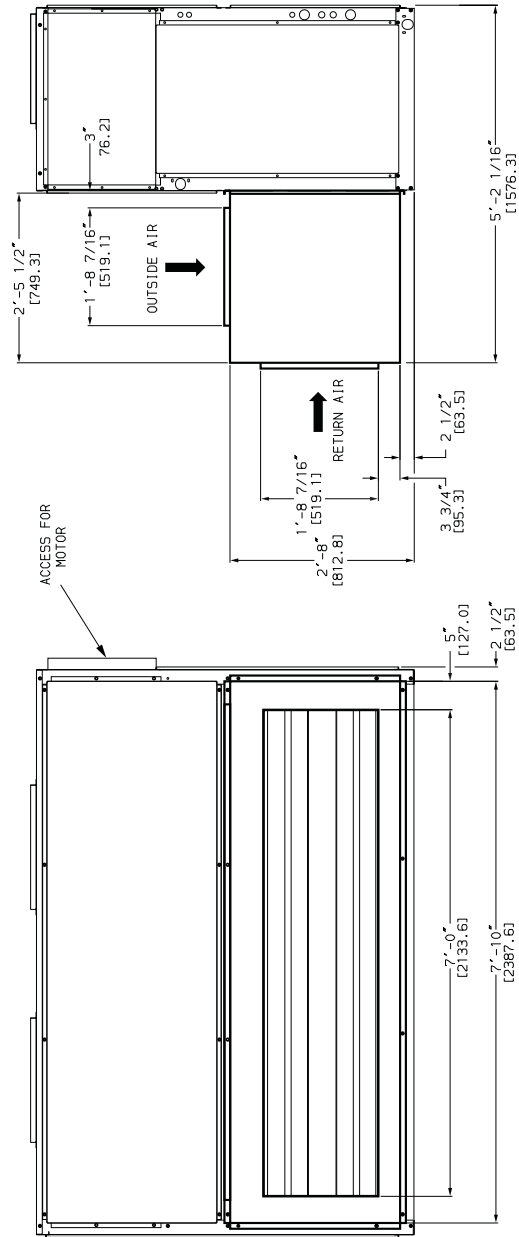
524J

**CERTIFIED DIMENSION - ACCESSORIES 524J\*28**



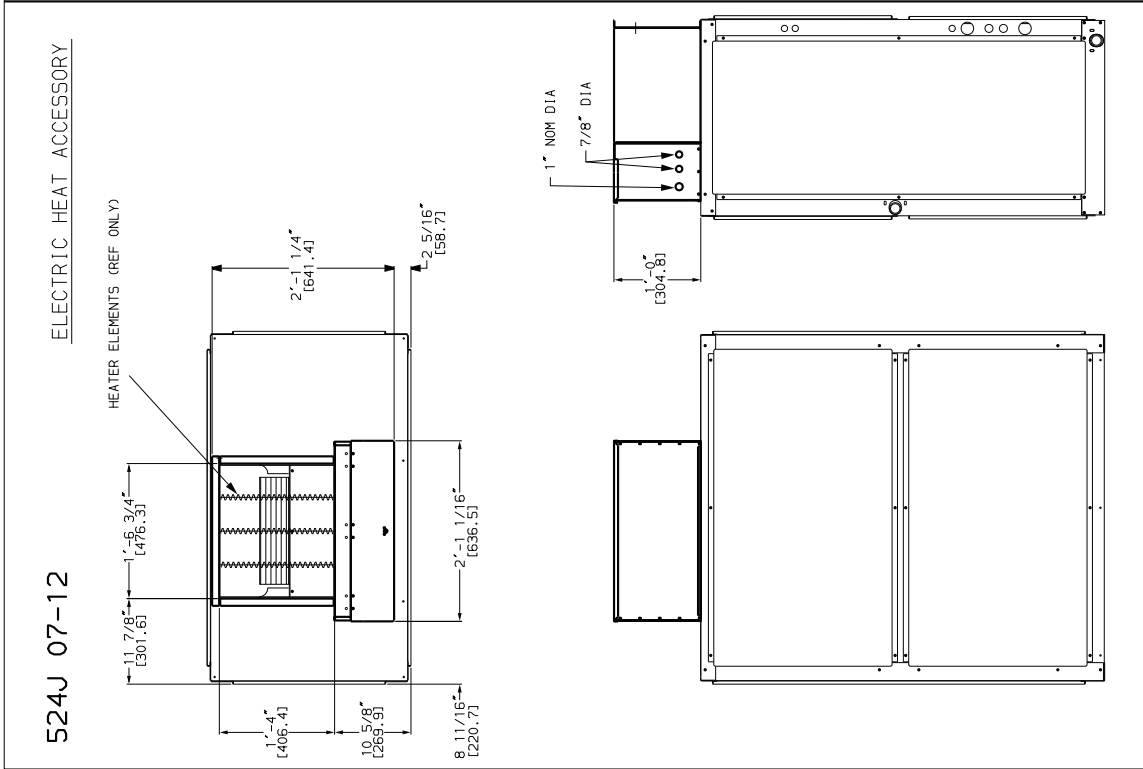
HOT WATER COIL ACCESSORY  
STEAM COIL ACCESSORY

ECONOMIZER ACCESSORY



ECONOMIZER ACCESSORY

# CERTIFIED DIMENSION - ACCESSORIES



C11436

524J

